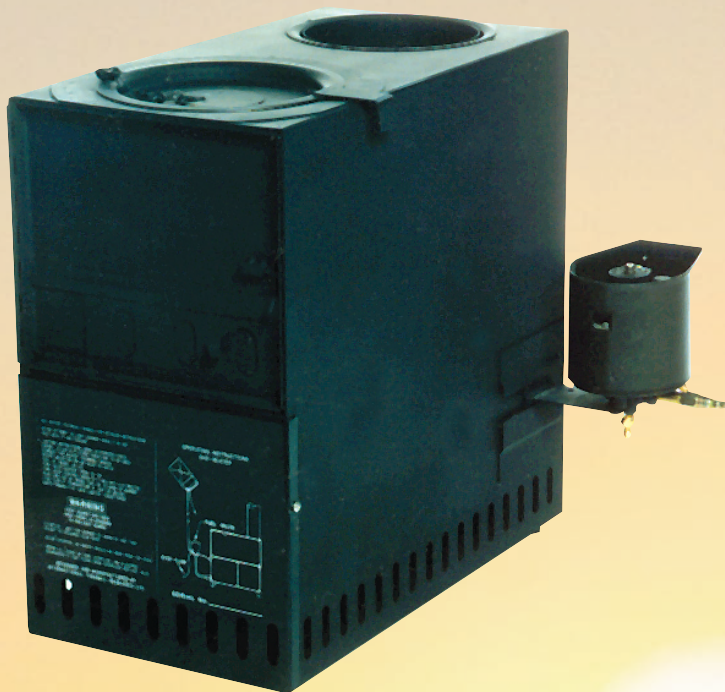


The Space Heater Arctic (SHA) Heater

The Space Heater Arctic (SHA), is individually packed, self contained, and produces 23,000 BTU from a 9"W X 17"H X 17.5"D , 41 lb. unit. It includes the fail-safe, non-flooding vaporizing burner which is controlled by adjusting an attached tri-viscosity fuel control valve. It is designed for use with DF1, DF2, DFA, JP8, JetA1, and Kerosene.



The SHA Heater is supplied with the following:

- Connections for 5 gallon Jerry can
- 8 foot Stack Assembly
- Raincap with guylines
- Primer cup
- Gravity feed adapter
- Fuel supply hose and vent hose
- Fuel Control Valve
- Wire grate for solid fuel
- Technical Manual

OPTIONAL ACCESSORIES

- Fuel can stand
- Fuel Can (Jerry Can)



INTERNATIONAL THERMAL RESEARCH

www.itrheat.com